

HOME TREND

# Industrial bohemia

Concrete and exposed brick are no longer just for minimalists – paired with artisan textiles and greenery, they take a free-spirited turn *Words EMMA LOVE Photography ANSON SMART*



Livingroom The Lines of Confluence 2 artwork by Judith Wright hangs above a 'Tactile' sofa by Vincenzo De Cottilis for Baxter. The rattan chair is by Sika Design Stockist details on p194 >



# P

lanting a fig tree in the centre of their cottage felt the most natural way for South African-born couple Natalie and Keiron Devlin to bring softness to the space's industrial style. The home, in the Sydney suburb of Annandale, would look quite severe, with its exposed brick walls and concrete floors, were it not for the branches of the tree that reach up through the central stairwell towards a retractable glass roof. 'From community gatherings to school lessons, somehow everything happens under a tree in South Africa, and we wanted our home to nod to that in a subtle way,' explains Natalie of the statement greenery that sets the tone for this very contemporary take on urban chic.

The original property, which the couple bought in 2010, came with several add-ons, but still felt too cramped for family life with their two children – Indigo, now 13, and Guinness, ten. Working with architects Welsh + Major, and later Arent & Pyke interior design studio, they knocked down the outer buildings and started from scratch, constructing a new section that now houses the galley kitchen and living area, as well as a third bedroom. 'The brief to our architect was to create rough and mutable spaces that can perform a number of functions,' recalls Natalie. 'When it was built, our home was beautiful but very stark. It needed warming up in a way that didn't detract from its rawness.'

To loosen up the house's structure, Arent & Pyke used globally inspired artisan textiles. 'Nothing too frouncy or frou-frou, though,' says the interior design firm's co-founder Juliette Arent. 'We layered slubby, raw linens that offer softness while still being in keeping with the architecture.' To this she added ambient lighting, handmade ceramics and artworks chosen organically over time. Colour has been used to inject personality, but the tones are muted – 'olive, khaki and chartreuse, all hues that work beautifully with grey concrete,' adds Juliette. The result is a grown-up refresh of the bohemian look. 'There was something about the space that demanded texture,' continues Natalie. 'For me, our cottage manages to be interesting in a calm, relaxed way.' [welshmajor.com](http://welshmajor.com); [arentpyke.com](http://arentpyke.com)



**Dining area** 'Beetle' chairs by GamFratesi for Gubi are placed below artist Christian Thompson's *Untitled (Banksia Leaf)* **Portrait** Homeowners Keiron and Natalie Devlin **Opposite** The 'LC4' chaise longue by Le Corbusier for Cassina sits beside an 'Akari' floor lamp by Isamu Noguchi for Vitra **Stockist details on p194** ▶





‘When it was built, our home was BEAUTIFUL but VERY STARK. It needed WARMING UP in a way that didn’t detract from its RAWNESS’

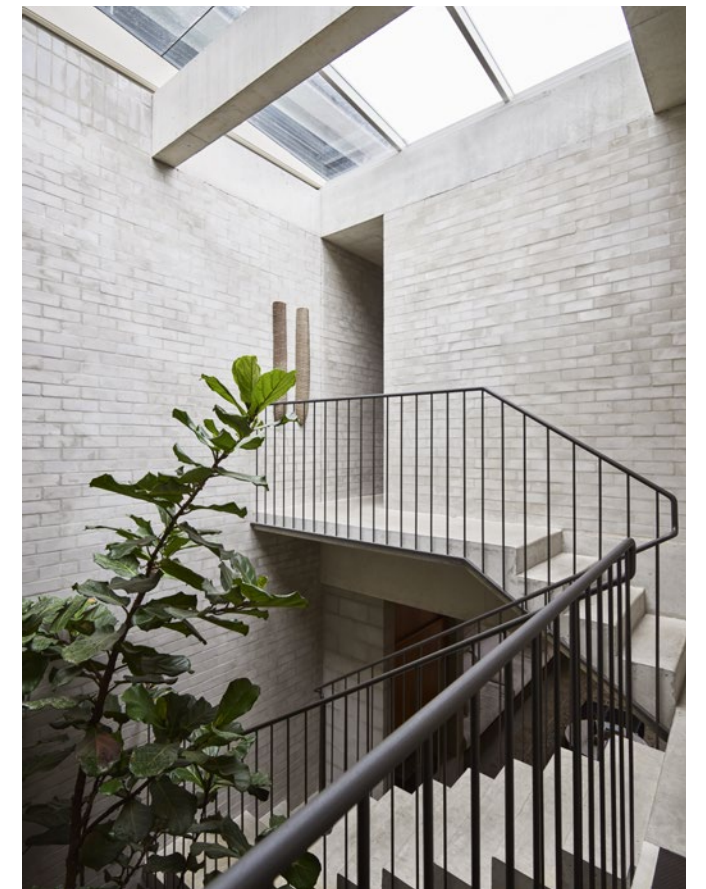


**Living area** A ‘Tivoli’ travertine-topped coffee table by Ten10 sits on a vintage rug. The sofa, upholstered in Belgian linen, was designed by Arent & Pyke, while the shelves above are a bespoke design in Tasmanian blackwood, steel and brass by architects Welsh + Major **Stockist details on p194** ▶





‘From community gatherings to school lessons, somehow everything happens UNDER A TREE in South Africa. We wanted our home to nod to that in a SUBTLE way’



**Kitchen** The bespoke cabinets are by Welsh + Major **Courtyard** ‘Palissade’ stools by Ronan and Erwan Bouroullec for Hay and a terrazzo table by Arent & Pyke **Stairway** A fiddle-leaf fig tree grows towards the retractable glazed roof **Stockist details on p194 >**



Textiles in EARTHY TONES  
and original artworks bring an  
ARTISAN QUALITY to this  
home's severe structure of  
concrete and EXPOSED BRICK



**Bathroom** For similar pencil tiles, try Fired Earth **Bedroom** A 'Crosshatch' chair by EOOS for Herman Miller sits below the *I Had Searched Everywhere for My Love Except the Other Side of Death* artwork by Leah Fraser. The bedlinen is by Society Limonta **Stockist details on p194** 